

# Pausa

design Kari Asikainen

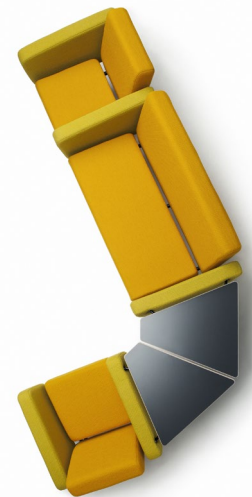
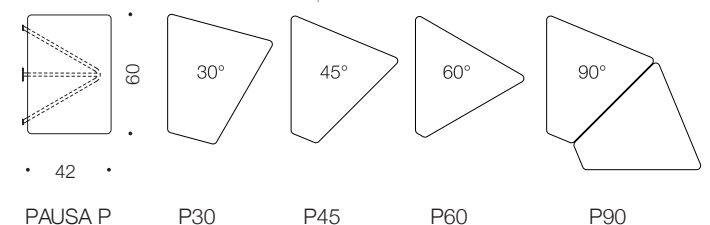
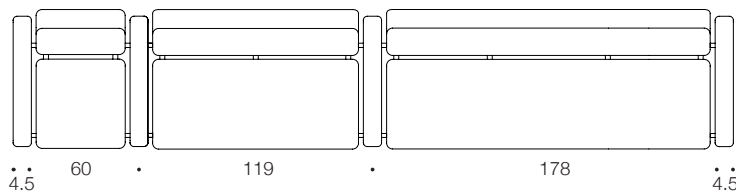
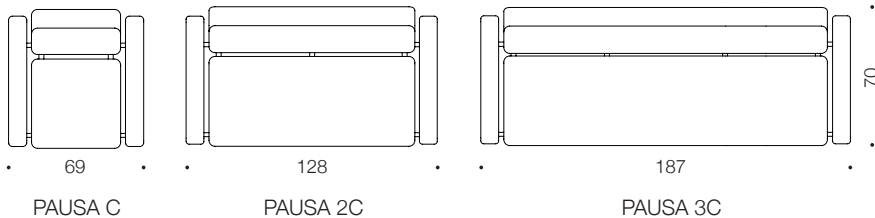
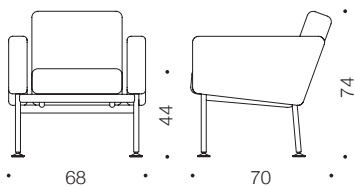
Pausa collection is exceptionally versatile series of furniture modules which can be easily connected together. Pausa offers almost an endless amount of solutions for good sitting.

Pausa is available as an easy chair, as a chain of sofas with dividing arm rests or as an individual sofa for 2 or 3 persons. There are two heights for the back rest. Collection includes also an ottoman, or a bench made of several ottomans. All Pausa modules can be connected together, with or without table. Table top sizes of different forms provide possibility for furniture installations of various different shapes.

Each Pausa unit is easily maintained and there are no places where dust and dirt could hide as all the components of a Pausa module are well separated. Each component is also replaceable. Pausa collection can be produced with fabrics specified in the interior plan. Steel frame is produced as powder coated or chromed. The tabletops are available veneered or with laminate surface.



# ARKTIS



## PRODUCT DETAILS

Legs painted metal  
 Full upholstery with various fabric choice. Please see Fabrics sheet.  
 Fabric needed PAUSA C 3.2m/pc, PAUSA 2C 3.7m/pc, PAUSA 3C 5.5m/pc.

## Options

Tabletop veneered/laminated plywood with painted metal support  
 Tabletop can be installed on the side of/between modules in various angles, 15°, 30°, 45°, 60° and 90°.



**ARKTIS furniture Oy**  
 Finland  
 Tel: +358 400 740 212  
 sales@arktis.fi  
 www.arktis.fi